

ELBA Bioflux, Volume 7(2)
December, 30, 2015

**Extreme Life, Biospeology & Astrobiology -
International Journal of the Bioflux Society**



International Standard Serial Number

Print ISSN 2066-7671; Online ISSN 2067-6360

Published by Bioflux; twice a year. Peer-reviewed (single blind peer-review).

ELBA Bioflux welcomes original articles, reviews, minireviews, short notes, letters, opinions and editorials on extremophilic species, extreme behavior or metabolism, cave species or communities, astrobiology, cryopreservation, microbiology and lichenology.

Editorial Board Expanded

Editor-in-Chief

Carpa Rahela - Babes-Bolyai University, Cluj-Napoca (Romania)
Contact: k_hella@yahoo.com

Editors

Alizadeh Omid - Islamic Azad University (Iran)
Botha Miklos - Bioflux SRL, Cluj-Napoca (Romania)
Bunnag Sumontip - Khon Kaen University, Muang Khon Kaen (Thailand)
Czyżewska Urszula K. - John Paul II Catholic University of Lublin (Poland)
Demayo Cesar G. - Mindanao State University, Iligan City (Philippines)
Dobrota Cristina - Babes-Bolyai University, Cluj-Napoca (Romania)
Kataria Nalini - Rajasthan University of Veterinary and Animal Sciences (India)
Kataria Anil Kumar - Rajasthan University of Veterinary and Animal Sciences (India)
Petrescu-Mag Ruxandra Malina - Babes-Bolyai University, Cluj-Napoca (Romania)
Petrescu-Mag Ioan Valentin - USAMV Cluj, Cluj-Napoca, University of Oradea (Romania)
Petrovici Milca - West University of Timisoara, Timisoara (Romania)
Pimda Witaya - Khon Kaen University, Muang Khon Kaen (Thailand)
Serrano Jr. Augusto E. - University of the Philippines, Visayas, Iloilo (Philippines)
Torres Mark Anthony J. - Mindanao State University, Iligan City (Philippines)
Zambare Vasudeo - South Dakota School of Mines and Technology (USA)

Editorial Councillor

Velter Victor: UEFISCDI, Bucharest (Romania)

Scientific Reviewers

Appelbaum Samuel - University of the Negev (Israel)
Brown Simon - University of Tasmania, Launceston (Australia)
Butiuc-Keul Anca - Babes-Bolyai University, Cluj-Napoca (Romania)
Caipang Christopher M.A. - Temasek Polytechnic (Singapore)
Costea Ramona Ioana - USAMV Cluj, Cluj-Napoca (Romania)
Fendrihan Sergiu - Romanian Bioresource Centre, Bucharest (Romania)
Gagyí-Pálffy Andreea - Babes-Bolyai University, Cluj-Napoca (Romania)
Gavriloaie Claudiu - SC Bioflux SRL, Cluj-Napoca (Romania)
Georgescu Bogdan - USAMV Cluj, Cluj-Napoca (Romania)
Gwaza Deeve Sebastian - University of Agriculture, Makurdi (Nigeria)
Hakizimana Charles - Independent Researcher (Burundi)
Hasanuzzaman Mirza - Kagawa Univ. (Japan); Sher-e-Bangla Agric. Univ. (Bangladesh)
Lalla Emmanuel Alexis - Instituto Nacional de Técnica Aeroespacial, Madrid (Spain)
Maior Cornelia Maria - Babes-Bolyai University, Cluj-Napoca (Romania)
Musonda Felix F. - The Copperbelt University, Kitwe (Zambia)
Negrea Bogdan Mihai - University of Liege, Liege (Belgium)

Oroian Ioan – USAMV Cluj, Cluj-Napoca (Romania)
Parsaeimehr Ali - National Academy of Science, Yerevan (Republic of Armenia)
Petrescu Dacia Crina - Babes-Bolyai University, Cluj-Napoca (Romania)
Popescu Irinel Eugen - UAIC Iasi, Iasi (Romania)
Pricop Emilian - Alexandru Ioan Cuza University, Iasi (Romania)
Ravindran Gobinath - PSNA CET, Pethanachi Illam (India)
Shukla Pratyosh - BIT Mesra, Deemed University, Ranchi (India)
Talu Stefan - Technical University of Cluj (Romania)
Watkins Roger L. S. - Massey University, Palmerston North (New Zealand)

Contact Publisher

Bioflux (publishing house)
SC Bioflux SRL, 54 Ceahlău Street, Cluj-Napoca, 400488, Romania, European Union.
Ioan Valentin Petrescu-Mag,
e-mail: zoobiomag2004@yahoo.com
Ruxandra Mălina Petrescu-Mag,
e-mail: pmalina2000@yahoo.com

Abstracting and Indexes

Thomson - Master Journal List (Zoological Record)
ISI Web of Knowledge - Thomson Reuters (via Zoological Record)
ISI Web of Knowledge - Thomson Reuters (via CABI)
Index Copernicus International
CAB International (CABI, UK)
DOAJ (Lund University Library)
EBSCO Publishing - EBSCOhost
Socolar (CEPIEC, China)
Ulrich's Periodicals Directory
Serials Solutions
Wolters Kluwer - OVID LinkSolver (via CABI)
CAB Direct (part of CABI)
CNCSIS - quoted B+
Open J Gate (World's Biggest Open Access English Language Journals Portal)
University of Washington - University Libraries (Digital Library)
NewJour (Georgetown University Digital Library)
Directory of E-Journals
New School Libraries - Get it!
Korea University Library
Astronomy Resources
Google Scholar (Academic Search Engine)
GOOGLE - Search Engine
Yahoo - Search Engine (and other several tens of indexes)

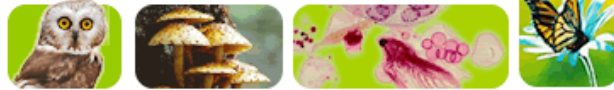
Our collaborators

Zoological Record (part of Biosis)

ION contains the organism names related data gathered from the scientific literature for Thomson Reuters' *Zoological Record*[®] database. Viruses, bacteria and plant names will be added from other Thomson Reuters databases such as *BIOSIS Previews*[®] and *Biological Abstracts*[®]



Index to Organism Names (ION)



Socolar

The free scholastic search engine is established by China Educational Publications Import and Export Corporation (CEPIEC). Under the leadership of China Ministry of Education, CEPIEC is the only company dealing with publication ex-im business in the education field. CEPIEC has been serving colleges and universities, research institutions and public libraries in China for more than 20 years, providing them with excellent academic resources from all over the world. Contact:

No 41 Zhong Guan Cun Street,
Haidian District, Beijing,
P.R.China 100080

Tel: +86 (0)10 6251 4068
e-mail: li_yanxia@cepiec.com.cn
Fax: +86 (0)10 6251 4068
www.cepiec.com.cn



CABI is a not-for-profit international organization that improves people's lives by providing information and applying scientific expertise to solve problems in agriculture and the environment. Their mission and direction is influenced by their member countries who help guide the activities they undertake. These include scientific publishing, development projects and research, and microbial services. 2010 marks 100 years of CABI. Since its beginnings as an entomological committee in 1910, it then developed into a Commonwealth organization before becoming a truly international service in agricultural information, pest identification and biological control in the mid 1980s.



EBSCO[®]host[®] databases are the most-used, premium online information resources for tens of thousands of institutions worldwide, representing millions of end-users.

Address: 10 Estes Street
Ipswich, MA 01938 USA
Phone: (978) 356-6500
Toll Free: (800) 653-2726 (USA & Canada)
Fax: (978) 356-6565
E-mail: information@ebSCOhost.com



Contents

Serrano Jr. A. E., Peralta E. M., 2015 The effects of temperature, pH and metal ions on alpha amylase activity of the brine shrimp *Artemia salina*. ELBA Bioflux 7(2):77-86.

Dequito A. Q. D., Traifalgar R. F. M., Saclauso C. A., Briones Z. F. A., Yap E. E. S., 2015 Biodegradation of 2-methylisoborneol (2-MIB) and geosmin by bacteria isolated from aquaculture pond water and sediment. ELBA Bioflux 7(2):87-93.

Flores F. L., Arcega B. F. D., Gegone Q. J. N., Minguito M. J. O., Martinez M. P., Aragon R. T., Requieron E. A., Torres M. A. J., 2015 Skull shape variation of lesser musky fruit bat (*Ptenochirus minor*) in Lumakil, Polomolok, South Cotabato, Philippines. ELBA Bioflux 7(2):94-102.

Dwinovantyo A., Prartono T., Syafrizal S., Udiharto U., Effendi H., 2015 Isolation of deep-sea sediment bacteria for oil spill biodegradation. ELBA Bioflux 7(2):103-108.

Serrano Jr. A. E., 2015 Kinetic parameters of leucine aminopeptidases, optimal pH and temperature in the mud crab *Scylla serrata* and the brine shrimp *Artemia salina*. ELBA Bioflux 7(2):109-116.

Allado-Ombat L. A., Teves F. G., 2015 Antibacterial and antifungal assays of the stem extracts of two Philippine lianas, *Bauhinia integrifolia* Roxb. and *Strongylodon paucinervis* Merr. ELBA Bioflux 7(2):117-123.

