

**ELBA Bioflux, Volume 8(1)**  
**June, 30, 2016**

**Extreme Life, Biospeology & Astrobiology -  
International Journal of the Bioflux Society**



# International Standard Serial Number

## Print ISSN 2066-7671; Online ISSN 2067-6360

Published by Bioflux; twice a year. Peer-reviewed (single blind peer-review).

ELBA Bioflux welcomes original articles, reviews, minireviews, short notes, letters, opinions and editorials on extremophilic species, extreme behavior or metabolism, cave species or communities, astrobiology, cryopreservation, microbiology and lichenology.

## Editorial Board Expanded

### Editor-in-Chief

Carpa Rahela - Babes-Bolyai University, Cluj-Napoca (Romania)  
Contact: k\_hella@yahoo.com

### Editors

Alizadeh Omid - Islamic Azad University (Iran)  
Botha Miklos - Bioflux SRL, Cluj-Napoca (Romania)  
Bunnag Sumontip - Khon Kaen University, Muang Khon Kaen (Thailand)  
Czyżewska Urszula K. - John Paul II Catholic University of Lublin (Poland)  
Demayo Cesar G. - Mindanao State University, Iligan City (Philippines)  
Dobrota Cristina - Babes-Bolyai University, Cluj-Napoca (Romania)  
Kataria Nalini - Rajasthan University of Veterinary and Animal Sciences (India)  
Kataria Anil Kumar - Rajasthan University of Veterinary and Animal Sciences (India)  
Petrescu-Mag Ruxandra Malina - Babes-Bolyai University, Cluj-Napoca (Romania)  
Petrescu-Mag Ioan Valentin - USAMV Cluj, Cluj-Napoca, University of Oradea (Romania)  
Pimda Witaya - Khon Kaen University, Muang Khon Kaen (Thailand)  
Serrano Jr. Augusto E. - University of the Philippines, Visayas, Iloilo (Philippines)  
Torres Mark Anthony J. - Mindanao State University, Iligan City (Philippines)

### Editorial Councillor

Velter Victor: UEFISCDI, Bucharest (Romania)

### Scientific Reviewers

Banatean-Dunea Ioan, USABT, Timisoara (Romania)  
Brown Simon - University of Tasmania, Launceston (Australia)  
Butiuc-Keul Anca - Babes-Bolyai University, Cluj-Napoca (Romania)  
Caipang Christopher M.A. - Temasek Polytechnic (Singapore)  
Fendrihan Sergiu - Romanian Bioresource Centre, Bucharest (Romania)  
Gagyí-Pálffy Andreea - Babes-Bolyai University, Cluj-Napoca (Romania)  
Gavriloaie Claudiu - SC Bioflux SRL, Cluj-Napoca (Romania)  
Georgescu Bogdan - USAMV Cluj, Cluj-Napoca (Romania)  
Gwaza Deeve Sebastian - University of Agriculture, Makurdi (Nigeria)  
Hakizimana Charles - Independent Researcher (Burundi)  
Hasanuzzaman Mirza - Kagawa Univ. (Japan); Sher-e-Bangla Agric. Univ. (Bangladesh)  
Lalla Emmanuel Alexis - Instituto Nacional de Técnica Aeroespacial, Madrid (Spain)  
Maior Cornelia Maria - Babes-Bolyai University, Cluj-Napoca (Romania)  
Musonda Felix F. - The Copperbelt University, Kitwe (Zambia)  
Negrea Bogdan Mihai - University of Liege, Liege (Belgium)  
Oroian Ioan - USAMV Cluj, Cluj-Napoca (Romania)  
Parsaeimehr Ali - National Academy of Science, Yerevan (Republic of Armenia)  
Petrescu Dacinia Crina - Babes-Bolyai University, Cluj-Napoca (Romania)

Pricop Emilian - Alexandru Ioan Cuza University, Iasi (Romania)  
Ravindran Gobinath - PSNA CET, Pethanachi Illam (India)  
Shukla Pratyooash - BIT Mesra, Deemed University, Ranchi (India)  
Talu Stefan - Technical University of Cluj (Romania)  
Watkins Roger L. S. - Massey University, Palmerston North (New Zealand)

#### **Contact Publisher**

Bioflux (publishing house)  
SC Bioflux SRL, 54 Ceahlău Street, Cluj-Napoca, 400488, Romania, European Union.  
Ioan Valentin Petrescu-Mag,  
e-mail: zoobiomag2004@yahoo.com  
Ruxandra Mălina Petrescu-Mag,  
e-mail: pmalina2000@yahoo.com

#### **Abstracting and Indexes**

ISI Web of Knowledge - Thomson Reuters (via Zoological Record)  
ISI Web of Knowledge - Thomson Reuters (via CABI)  
Index Copernicus International  
CAB International (CABI, UK)  
DOAJ (Lund University Library)  
EBSCO Publishing - EBSCOhost  
Socolar (CEPIEC, China)  
Ulrich's Periodicals Directory  
Serials Solutions  
Wolters Kluwer - OVID LinkSolver (via CABI)  
CAB Direct (part of CABI)  
CNCSIS - quoted B+  
Open J Gate (World's Biggest Open Access English Language Journals Portal)  
University of Washington - University Libraries (Digital Library)  
NewJour (Georgetown University Digital Library)  
Directory of E-Journals  
New School Libraries - Get it!  
Korea University Library  
Astronomy Resources  
Google Scholar (Academic Search Engine)  
GOOGLE - Search Engine  
Yahoo - Search Engine (and other several tens of indexes)

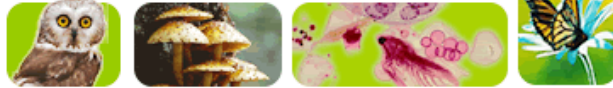
# Our collaborators

## Zoological Record (part of Biosis)

ION contains the organism names related data gathered from the scientific literature for Thomson Reuters' *Zoological Record*<sup>®</sup> database. Viruses, bacteria and plant names will be added from other Thomson Reuters databases such as *BIOSIS Previews*<sup>®</sup> and *Biological Abstracts*<sup>®</sup>



## Index to Organism Names (ION)



# Socolar

The free scholastic search engine is established by China Educational Publications Import and Export Corporation (CEPIEC). Under the leadership of China Ministry of Education, CEPIEC is the only company dealing with publication ex-im business in the education field. CEPIEC has been serving colleges and universities, research institutions and public libraries in China for more than 20 years, providing them with excellent academic resources from all over the world. Contact:

No 41 Zhong Guan Cun Street,  
Haidian District, Beijing,  
P.R.China 100080

Tel: +86 (0)10 6251 4068  
e-mail: [li\\_yanxia@cepiec.com.cn](mailto:li_yanxia@cepiec.com.cn)  
Fax: +86 (0)10 6251 4068  
[www.cepiec.com.cn](http://www.cepiec.com.cn)



CABI is a not-for-profit international organization that improves people's lives by providing information and applying scientific expertise to solve problems in agriculture and the environment. Their mission and direction is influenced by their member countries who help guide the activities they undertake. These include scientific publishing, development projects and research, and microbial services. 2010 marks 100 years of CABI. Since its beginnings as an entomological committee in 1910, it then developed into a Commonwealth organization before becoming a truly international service in agricultural information, pest identification and biological control in the mid 1980s.



EBSCO<sup>®</sup>host<sup>®</sup> databases are the most-used, premium online information resources for tens of thousands of institutions worldwide, representing millions of end-users.

Address: 10 Estes Street  
Ipswich, MA 01938 USA  
Phone: (978) 356-6500  
Toll Free: (800) 653-2726 (USA & Canada)  
Fax: (978) 356-6565  
E-mail: [information@ebSCOhost.com](mailto:information@ebSCOhost.com)



## Contents

Dacar M. R. B., Nuneza O. M., 2016 Microhabitat of leaf-dwelling Pholcid spiders (Araneae: Pholcidae) in Rajah Sikatuna Protected Landscape (RSPL), Bohol, Philippines. ELBA Bioflux 8(1):1-6.

Responde M. A., Nuneza O. M., 2016 Diversity of pholcid spiders (Araneae: Pholcidae) in selected areas of Southeastern Mindanao, Philippines. ELBA Bioflux 8(1):7-17.

Quinones L. E., Barrion-Dupo A. L., Nuneza O. M., 2016 Salticidae species richness in Rajah Sikatuna Protected Landscape (RSPL), Bohol, Philippines. ELBA Bioflux 8(1):18-26.

Mascarenas D. R., Torres A. J., 2016 Carapace shape differences between subterranean and aboveground populations of *Macrobrachium* sp. from Marinduque, Philippines. ELBA Bioflux 8(1):27-33.

